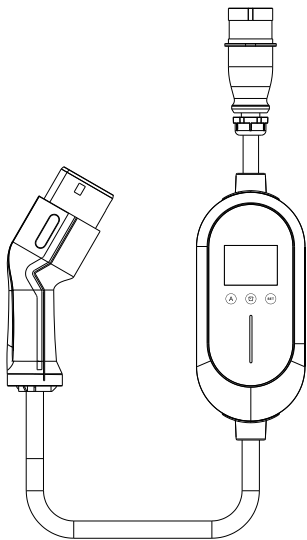


# Portable Electric Vehicle Charger

**Model** FE-P-EU-B35  
FE-P-EU-B70



## User manual

Thank you for using the EV AC charging station from Karunte !  
Please read carefully before installation or usage.

# 1 Warranty

---

Anhui Karunte Technology Co., Ltd (Karunte) warrants that products supplied to Customer pursuant to this Agreement / Contract should meet merchantable quality, all applicable safety standards and free from any defect of design, material and workmanship within the warranty period. The warranty period is Twelve (12) months since from the delivery date. The warranties does not include the damages resulted from inappropriate storage, incorrect installation, improper operation or bad environment.

# 2 Safety precautions for product use

---

## Safe to use

- Do not put flammable, explosive or combustible materials, chemicals, flammable vapors and other dangerous items near the charging gun.
- Keep the charging gun head clean. If it is dirty, please wipe it with a clean dry cloth. It is strictly forbidden to touch the charging gun core with your hands when charging.
- It is strictly forbidden to use the charging gun when the charging gun or charging cable is defective, cracked, worn, or the broken charging cable is exposed. If you find it, please contact the after sales staff in time.
- Do not attempt to disassemble, repair, or modify the charging pile. If there is a need for maintenance or modification, please contact the staff. Improper operations may cause damage water leakage, and electricity leakage.
- If there is any abnormal situation during use, all input and output power can be cut off immediately.
- In case of rain and thunder, please charge carefully.

- Do not allow children to approach and use the charging gun during the charging process to avoid injury;
- During the charging process, the vehicle is prohibited from driving, and charging can only be performed after the electric vehicle is turned off.

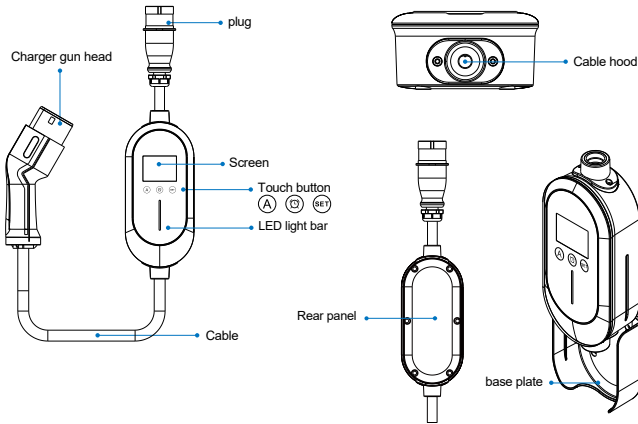
## Requirements for safe power supply lines

- 16A current specification requirements: use standard multi-strand copper wire with not less than 3 cores and 2.5 square millimeters; when the power supply line is greater than 40 meters, it should be thickened according to the actual situation.
- 32A current specification requirements: use standard multi-strand copper wire with not less than 3 cores and 6 square millimeters; when the power supply line is greater than 40 meters, it should be thickened according to the actual situation.
- Aluminum wire is prohibited.

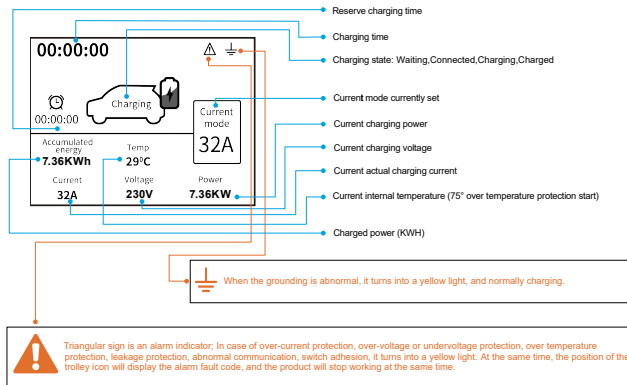
## Air switch requirements

- 16A current specification requirements: Use dedicated Euro-plug sockets; if an air switch is required for installation, its current rating should be no less than 20A.
- 32A Use a 2P air switch. Charging stations are not recommended to share power meters or air switches with household appliances. When using independent air switches, the rating should not be less than 40A. 32A plugs require dedicated sockets.
- It is recommended to install both an air switch and an RCD leakage protector. A combined device can be used. The RCD leakage protector should have a rating of not less than: Type A, AC:30mA DC:6mA

### 3 Product Description



#### LED Display function



### 4 Instructions for use

- 1 Turn off the vehicle, pull the handbrake, and lock the door;
  - 2 After the power plug is successfully connected, plug the charging gun into the car charging port, and charge it by itself after the connection is successful;
  - 3 After charging, first unplug the charging gun, then unplug the power plug/turn off the air switch power supply;
  - 4 The display interface and indicator interface;
- #### Touch button operation instructions
- A Short press the "A" button, the current will automatically switch to the next current mode, cycling between each gear. (16A chargers: 8-10-12-14-16A. 32A chargers: 8-12-16-20-24-28-32A)
  - B Short press the button, Countdown to reserve charging, and the time can cycle between each gear. (0H, 1H, 2H, 3H, 4H, 5H, 6H, 7H, 8H, 9H, 10H, 11H, 12H)
  - SET After adjusting the current or time, press the "SET" button to complete the setting.

### 5 Package Contents



Open the package, then check and verify following items after receiving the charger :

- ▶ Check the charger's external appearance. If there is any breakage or other damage, please inform the seller immediately.
- ▶ All accessories quantity and type as follows. If there is a shortage in the quantity of any item or if any items are missing, please contact the seller at once.

Mainframe(x1)	User Manual (x1)	φ6 Expansion Pipe (x4)	PM4*35 Screw (x4)	base plate(x1)

The 16A version does not have a base.

## 6 Features and Specifications

			
<b>Model</b>	FE-P-EU-B35	<b>Model</b>	FE-P-EU-B70
<b>Input/output voltage</b>	AC 230V/ Single phase	<b>Input/output voltage</b>	AC 230V/ Single phase
<b>Input/output current</b>	8-10-12-14-16A adjustable	<b>Input/output current</b>	8-12-16-20-24-28-32A Adjustable
<b>Max output power</b>	3.68KW	<b>Max output power</b>	7.36KW
<b>Frequency</b>	50/60Hz		
<b>Input plug</b>	Schuko	<b>Input plug</b>	CEE 3-Pin
<b>Output plug</b>	Type2 (Mennekes)		
<b>Output cable</b>	5M		
<b>Withstand Voltage</b>	3000V		
<b>Work Altitude</b>	<2000M		
<b>allyStand by</b>	<3W		
<b>Protection</b>	Overvoltage protection, overload protection, over-temp protection, under voltage, Earth leakage protection, lightning protection, short circuit protection		
<b>IP level</b>	IP65		
<b>Touch button</b>	Yes		
<b>LCD screen</b>	Yes		
<b>Current adjustment</b>	Yes		
<b>Timing/appointment</b>	Yes		
<b>Certification</b>	CE, RoHS		

## 7 Fault indication description

Number	Item	Explain
1	Error1	Over-temperature protection: When the temperature in the charger exceeds 75°C, the protection will be started. After the temperature is Below 65°C it will automatically recover.
2	Error2	Overvoltage or undervoltage protection: After the overvoltage or undervoltage fault disappears, it will automatically recover.
3	Error3	Overcurrent protection: When the current exceeds the warning value, the charger will cut off the power output, the output will be automatically restarted after 5s. If the current doesn't be normal value after three times, then need to be powered off manually and restarted for recovery.
4	Error4	Leakage protection: After the leakage protection is started, need to be powered off manually and restarted for recovery.
5	Error5	CP communication protection: After the protection is started, it is necessary to cutoff the power manually and check whether the charging gun is inserted in place or there are other circuit faults, then restart manually to recover.
6	Error7	The relay switch is stuck: When the protection is started, need to be powered off manually and restarted for recovery.